

The WBMA Educational Link Scholarship Fund

2005 Scholarship Recipients

Esther Guisinger was a graduate of Molalla High School in Molalla, OR. She currently attends Biola University in La Mirada, CA. Her major is Nursing.



Esther's long term goal would be to receive her RN certification and then take her nursing skills to an area of the world that is in desperate need of medical attention.



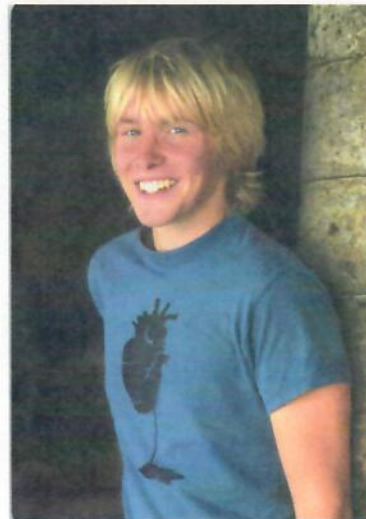
Kelee Judd attends the University of Idaho in Moscow, ID. She is majoring in Advertising. Kelle has been appointed U of I ad team art director, 2005.

After graduation she plans to learn from trade professionals, compile a thorough portfolio and apply for internships with local advertising agencies. Kelee also wishes to take advantage of the school's quarter abroad program by studying and working in Madrid.

Kimberly Kerr attends Western Oregon University in Monmouth, OR. She is majoring in Health and working towards her Bachelor of Science.



Kimberly hopes to become an RN and work in the ER or pediatrics. In the future she plans to help educate youth on nutrition and a healthy lifestyle to help combat the obesity epidemic in the United States.



John Whitman will graduate from Port Angeles High School this June, in Port Angeles, WA. He will be attending the University of Washington to study Industrial Design. During high school John was active in wrestling, football and baseball. John hopes to have a career where he can fuse practical

design with unique artistic ideas to create new products.

The WBMA Educational Link Scholarship Fund was established by the members of Western Building Material Association for the purpose of assisting in providing higher education opportunities for children of members' employees, and the employees themselves. The Link Fund is in its 13th year and recently awarded four \$1,000 scholarships to the above recipients. Scholarship amounts are determined by the interest income generated from the fund each year. The caliber of individuals applying for the scholarships is inspiring, reinforcing the fact that there continues to be a lot of very fine people in our industry. This perpetual fund can help see that these individuals develop into solid leaders of tomorrow by affording them the opportunity for higher education. The Link Fund receives its growth from the raffle held during WBMA's Annual Convention and other company contributions received throughout the year. The Link Fund has also grown through memorials as industry members remember their colleagues and loved ones. Your contribution qualifies as tax deductible to the non-profit WBMA Link Scholarship Fund, incorporated in the State of Washington. Contributions can be sent to the WBMA office at PO Box 1699 - Olympia, Washington, 98507.