

## The WBMA Educational Link Scholarship Fund 2007 Scholarship Recipients

### **Ashley Fuchs**

graduated from South Freemont High this May, in Chester, ID. She will be attending Carroll College to study Pre Med ~ Nursing.



During high school Ashley was active on the honor band and was selected as a member of the Idaho High School All Star Marching Band that marched in the 2003 Rose Bowl. Ashley hopes to become an Obstetrician/Gynecologist.



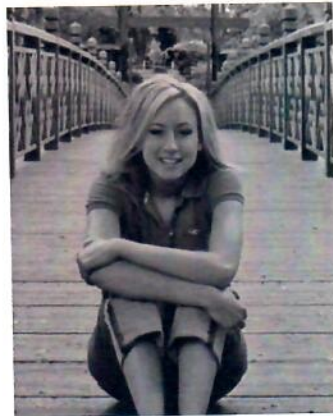
### **Joshua Johnson**

graduated from Chemicum High School this June, in Chemicum, WA. He will be attending Seattle Pacific University to study Electrical Engineering.

During high school Joshua was active in Soccer, the percussion band earning him the

Auburn field show "Best Percussion" award and participating in the young life program. His long term goals are to become an Electrical Engineer.

**Whitney Kangas** has attended Lower Columbia College and will be attending Western Washington University in Bellingham, WA.



She is in the process of getting her Associates Degree in Fine Arts. Whitney hopes to become an art teacher.

**Eric Whitman** graduated from Port Angeles Senior High School this June, in Port Angeles, WA. He will be attending the University of Washington to study graphic design or architecture.

Eric was active in the school newspaper and the student council. His long term goals are to become an independent architect or industrial designer and focus on creating economically and environmentally conscious structures.

The WBMA Educational Link Scholarship Fund was established by the members of Western Building Material Association for the purpose of assisting in providing higher education opportunities for children of members' employees, and the employees themselves. The Link Fund is in its 15th year and recently awarded four \$2,500 scholarships to the above recipients. Scholarship amounts are determined by the interest income generated from the fund each year. The caliber of individuals applying for the scholarships is inspiring, reinforcing the fact that there continues to be a lot of very fine people in our industry. This perpetual fund can help see that these individuals develop into solid leaders of tomorrow by affording them the opportunity for higher education. The Link Fund receives its growth from the raffle held during WBMA's Annual Convention and other company contributions received throughout the year. The Link Fund has also grown through memorials as industry members remember their colleagues and loved ones. Your contribution qualifies as tax deductible to the non-profit WBMA Link Scholarship Fund, incorporated in the State of Washington. Contributions can be sent to the WBMA office at PO Box 1699 - Olympia, Washington, 98507.